

# USER'S MANUAL

## SMOKE AND FIRE ALARM

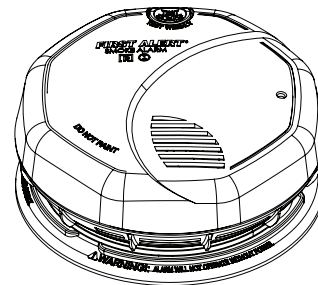
**First Alert®**

10 Year Sealed  
Battery Powered  
Photo & Ion Smoke Alarm

CONFORMS TO  
UL STD 217



Model SA3210



### IMPORTANT! PLEASE READ CAREFULLY AND SAVE.

The warnings/limitations card and user's manual contain important information about your Smoke Alarm's operation. If you are installing this Smoke Alarm for use by others, you must leave the warnings/limitations card and user's manual—or a copy of it—with the end user.

## INTRODUCTION

Thank you for choosing First Alert for your Safety needs. You have purchased a state of the art alarm designed to provide you with an early warning. Please take time to read this manual and make this alarm is an integral part of your family's safety plan.

All First Alert® and BRK® Smoke Alarms conform to regulatory requirements, including UL217 and are designed to detect particles of combustion. Smoke particles of varying number and size are produced in all fires.

**i** Ionization technology is generally more sensitive than photoelectric technology at detecting small particles, which tend to be produced in greater amounts by flaming fires, which consume combustible materials rapidly and spread quickly. Sources of these fires may include paper burning in a wastebasket, or a grease fire in the kitchen.

**p** Photoelectric technology is generally more sensitive than ionization technology at detecting large particles, which tend to be produced in greater amounts by smoldering fires, which may smolder for hours before bursting into flame. Sources of these fires may include cigarettes burning in couches or bedding.

For maximum protection, use both types of Smoke Alarms on each level and in every bedroom of your home.

## BEFORE YOU INSTALL THIS SMOKE ALARM

**IMPORTANT!** Read "Recommended Locations for Smoke Alarms" and "Locations to Avoid for Smoke Alarms" before beginning. This unit monitors the air, and when smoke reaches its sensing chamber, it alarms. It can give you more time to escape before fire spreads. This unit can ONLY give an early warning of developing fires if it is installed, maintained and located where smoke can reach it, and where all residents can hear it, as described in this manual. This unit will not sense gas, heat, or flame. It cannot prevent or extinguish fires. **Understand The Different Type of Smoke Alarms** - Battery powered or electrical? Different Smoke Alarms provide different types of protection. See "About Smoke Alarms" for details.

**Know Where To Install Your Smoke Alarms** - Fire Safety Professionals recommend at least one Smoke Alarm on every level of your home, in every bedroom, and in every bedroom hallway or separate sleeping area. See "Recommended Locations For Smoke Alarms" and "Locations To Avoid For Smoke Alarms" for details.

**Know What Smoke Alarms Can and Can't Do** - A Smoke Alarm can help alert you to fire, giving you precious time to escape. It can only sound an alarm once smoke reaches the sensor. See "Limitations of Smoke Alarms" for details.

**Check Your Local Building Codes** - This Smoke Alarm is designed to be used in a typical single-family home. It alone will not meet requirements for boarding houses, apartment buildings, hotels or motels. See "Special Compliance Considerations" for details.

## RECOMMENDED LOCATIONS FOR SMOKE ALARMS

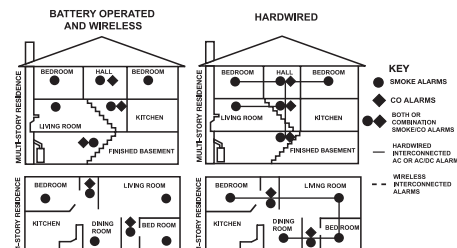
### Installing Smoke Alarms in Single-Family Residences

The National Fire Protection Association (NFPA), recommends one Smoke Alarm on every floor, in every sleeping area, and in every bedroom. In new construction, the Smoke Alarms must be AC powered and interconnected. See "Agency Placement Recommendations" for details. For additional coverage, it is recommended that you install a Smoke Alarm in all rooms, halls, storage areas, finished attics, and basements, where temperatures normally remain between 40° F (4.4° C) and 100° F (37.8° C). Make sure no door or other obstruction could keep smoke from reaching the Smoke Alarms.

#### More specifically, install Smoke Alarms:

- On every level of your home, including finished attics and basements.
- Inside every bedroom, especially if people sleep with the door partly or completely closed.
- In the hall near every sleeping area. If your home has multiple sleeping areas, install a unit in each. If a hall is more than 40 feet long (12 meters), install a unit at each end.
- At the top of the first-to-second floor stairway, and at the bottom of the basement stairway.

**IMPORTANT!** Specific requirements for Smoke Alarm installation vary from state to state and from region to region. Check with your local Fire Department for current requirements in your area. It is recommended AC or AC/DC units be interconnected for added protection.



## PLACEMENT RECOMMENDATIONS

NFPA 72 Chapter 29 - "For your information, the **National Fire Alarm and Signaling Code**, NFPA 72, reads as follows:"

### 29.5.1\* Required Detection.

29.5.1.1\* Where required by other governing laws, codes, or standards for a specific type of occupancy, approved single and multiple-station smoke alarms shall be installed as follows:

- (1)\*In all sleeping rooms and guest rooms
- (2)\*Outside of each separate dwelling unit sleeping area, within 21 ft (6.4 m) of any door to a sleeping room, with the distance measured along a path of travel
- (3) On every level of a dwelling unit, including basements
- (4) On every level of a residential board and care occupancy (small facility), including basements and excluding crawl spaces and unfinished attics
- (5)\*In the living area(s) of a guest suite
- (6) In the living area(s) of a residential board and care occupancy (small facility)

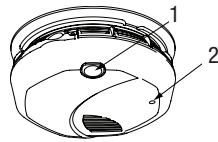
(Reprinted with permission from NFPA 72<sup>®</sup>, National Fire Alarm and Signaling Code Copyright © 2010 National Fire Protection Association, Quincy, MA 02269. This reprinted material is not the complete and official position of the National Fire Protection Association, on the referenced subject which is represented only by the standard in its entirety), (National Fire Alarm and Signaling Code<sup>®</sup> and NFPA 72<sup>®</sup> are registered trademarks of the National Fire Protection Association, Inc., Quincy, MA 02269).

### California State Fire Marshal (CSFM)

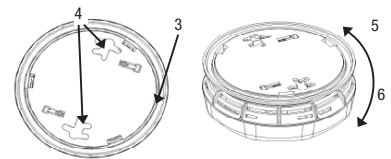
Early warning detection is best achieved by the installation of fire detection equipment in all rooms and areas of the household as follows: A Smoke Alarm installed in each separate sleeping area (in the vicinity, but outside bedrooms), and Heat or Smoke Alarms in the living rooms, dining rooms, bedrooms, kitchens, hallways, finished attics, furnace rooms, closets, utility and storage rooms, basements, and attached garages.

## HOW TO INSTALL THIS SMOKE ALARM - THE PARTS OF THIS SMOKE ALARM

1. Test/Silence button
2. Multi-color Indicator Light (Red or Green)



3. Mounting bracket
4. Universal Mounting Holes
5. Turn this way to remove from bracket
6. Turn this way to attach to bracket



## HOW TO INSTALL THIS SMOKE ALARM - FOLLOW THESE SIMPLE STEPS!

1. Hold the mounting bracket against the ceiling (or wall) so the two clusters of universal mounting holes are aligned approximately at the 9:00 and 3:00 o'clock positions. See image. Choose one of the three sets of holes shown, A, B or C (see image) and trace around one of the sets. Be sure to choose a top and bottom slot on opposite sides so you can rotate the Universal Mounting Bracket into position later. This will make it easier in the future to remove the mounting bracket without completely removing the screws.

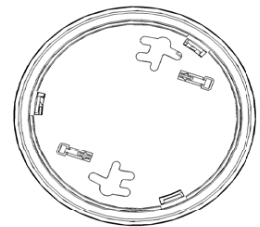
**⚠ WARNING!** Do not install this Smoke Alarm over an existing electrical box. Only AC powered units are intended for installation over electrical boxes.

### TOOLS YOU WILL NEED:

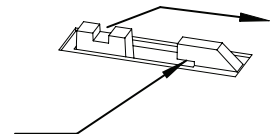
This unit is designed to be mounted on the ceiling, or on the wall if necessary.

- Pencil
- Drill with 3/16" (5 mm) drill bit
- Standard flathead screwdriver
- Hammer
- Pliers or utility knife, to activate optional "tamper-resistant" locking features

Mounting Hole Sets



2. Put the unit where it won't get covered with dust when you drill the mounting holes.
3. Using a 3/16" (5 mm) drill bit, drill a hole through the center of the oval outlines you traced.
4. Insert the plastic screw anchors (in the plastic bag with screws) into the holes. Tap the screw anchors gently with a hammer, if necessary, until they are flush with the ceiling or wall.
5. Install the screws but do not tighten completely. Attach the mounting bracket by aligning the screws in the open portion of the universal mounting slots and rotating the bracket into place. Tighten the screws until they are snug to secure the bracket. Do not over tighten.
6. **Activating the battery.** Mount alarm to mounting bracket to activate. Once unit is activated, it cannot be turned off.  
**NOTE: After you activate the battery, the power indicator light may flash and unit will chirp. (If the unit alarms, the light will blink rapidly, and the horn will repeatedly sound 3 beeps, pause, 3 beeps.) Once the Smoke Alarm is on the bracket, you can rotate the Alarm to adjust the alignment.**
7. Test the Smoke Alarm. See "Weekly Testing."
8. After 10 years of operation or Low Battery warning, deactivate the Smoke Alarm: Insert a tool below edge where shown and break tab. Then slide activation switch to deactivate mode.



**NOTE: At end of life or low battery indication (chirp): unit must be put into deactivation mode to deactivate remaining stored energy in battery. Unit will no longer function once put into this mode. Unit will resist re-mounting.**

## OPTIONAL LOCKING FEATURES

The locking feature is designed to discourage unauthorized removal of the Alarm. It is not necessary to activate the locks in single-family households where unauthorized battery or Alarm removal is not a concern.

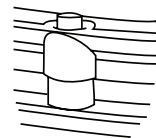
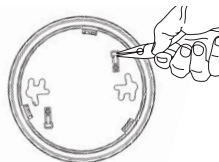
**Tools you will need:** • Needle-nose pliers or utility knife • Standard Flathead screwdriver.

The locking feature uses locking pins, which are molded into the mounting bracket. Using needle-nose pliers or a utility knife, remove one or both pins from the mounting bracket.

**IMPORTANT!** To permanently remove either lock, insert a flathead screwdriver between the locking pin and the lock, and pry the pin out of the lock.

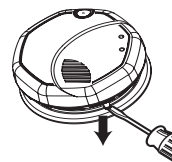
### TO LOCK THE ALARM ONTO MOUNTING BRACKET

1. Using needle-nose pliers, detach one locking pin from mounting bracket.
2. Insert the locking pin into the lock located on side of alarm.
3. Pin head will be positioned outside the alarm as shown.
4. When you attach the Smoke Alarm to the mounting bracket, the locking pin's head will fit into a notch on the bracket.



### TO UNLOCK THE MOUNTING BRACKET

1. Insert a flathead screwdriver between the mounting bracket pin and the mounting bracket.
2. Pry the Smoke Alarm away from the bracket by turning both the screwdriver and the Smoke Alarm counterclockwise (left) at the same time.



## UNDERSTANDING THE INDICATOR LIGHTS AND ALARM HORN PATTERNS

<b>Normal Operation</b>	Flashing Green LED once/minute. No Audible Alarm.	<b>Silence Mode</b>	Rapidly Flashing Red LED. Audible Alarm Off.
<b>Test Condition</b>	Rapidly Flashing Red LED. Audible Alarm.	<b>Low Battery / End of Life</b>	5 chirps approximately every 45 seconds
<b>Alarm Condition (Initiating Unit)</b>	Rapidly Flashing Red LED. Audible Alarm.	<b>Malfunction</b>	3 chirps

## WEEKLY TESTING

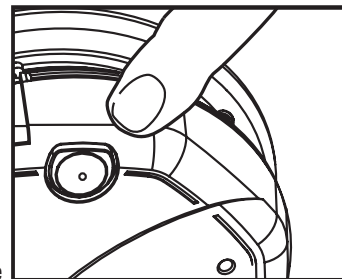
### ⚠ WARNING!

- NEVER use an open flame of any kind to test this unit. You might accidentally damage or set fire to the unit or to your home. The built in test switch accurately tests the unit's operation as required by Underwriters Laboratories, Inc. (UL).
- If the Alarm ever fails to test properly, replace it immediately. Products under warranty may be returned to the manufacturer for replacement. See "Limited Warranty" at the end of this manual.

### ⚠ CAUTION!

DO NOT stand close to the Alarm when the horn is sounding. Exposure at close range may be harmful to your hearing. When testing, step away when horn starts sounding. It is important to test this unit every week to make sure it is working properly. Using the test button is the recommended way to test this Smoke Alarm.

Press and hold the Test/Silence button on the cover of the unit until the alarm sounds (the unit may continue to alarm for a few seconds after you release the button). If it does not alarm, make sure the unit is receiving power and test it again. If it still does not alarm, replace it immediately.



During testing, you will hear a loud, repeating horn pattern: 3 beeps, pause, 3 beeps, pause. LED flashes once every second.

## REGULAR MAINTENANCE

This unit has been designed to be as maintenance-free as possible, but there are a few simple things you must do to keep it working properly:

- Test it at least once a week.
- Clean the Smoke Alarm at least once a month; gently vacuum the outside of the Smoke Alarm using your household vacuum's soft brush attachment. Test the Smoke Alarm. Never use water, cleaners or solvents since they may damage the unit.
- If the Smoke Alarm becomes contaminated by excessive dirt, dust and/or grime, and cannot be cleaned to avoid unwanted alarms, replace the unit immediately.
- Relocate the unit if it sounds frequent unwanted alarms. See "Locations To Avoid For Smoke Alarms" for details.

## IF THIS SMOKE ALARM SOUNDS - RESPONDING TO AN ALARM

During an alarm, you will hear a loud, repeating horn pattern: 3 beeps, pause, 3 beeps, pause.

### **⚠ WARNING!**

- If the unit alarms and you are not testing the unit, it is warning you of a potentially dangerous situation that requires your immediate attention. NEVER ignore any alarm. Ignoring the alarm may result in injury or death.
- If the unit alarms get everyone out of the house immediately.

If the unit alarms and you are certain that the source of smoke is not a fire—cooking smoke or an extremely dusty furnace, for example—open a nearby window or door and fan the smoke away from the unit (Use the Silence Feature to silence the Alarm). This will silence the alarm, and once the smoke clears the unit will reset itself automatically.

### **WHAT TO DO IN CASE OF FIRE**

- Don't panic; stay calm. Follow your family escape plan.
- Get out of the house as quickly as possible. Don't stop to get dressed or collect anything.
- Feel doors with the back of your hand before opening them. If a door is cool, open it slowly. Don't open a hot door. Keep doors and windows closed, unless you must escape through them.
- Cover your nose and mouth with a cloth (preferably damp). Take short, shallow breaths.
- Meet at your planned meeting place outside your home, and do a head count to make sure everybody got out safely.
- Call the Fire Department as soon as possible from outside. Give your address, then your name.
- Never go back inside a burning building for any reason.
- Contact your Fire Department for ideas on making your home safer.

### **⚠ WARNING!**

Alarms have various limitations. See "Limitations of Smoke Alarms" for details.

---

## USING THE SILENCE FEATURE

The Silence Feature can temporarily quiet an unwanted alarm for up to 8 minutes.

### **⚠ WARNING!**

The Silence Feature does not disable the unit—it makes it temporarily less sensitive to smoke. For your safety, if smoke around the unit is dense enough to suggest a potentially dangerous situation, the unit will stay in alarm or may re-alarm quickly. If you do not know the source of the smoke, do not assume it is an unwanted alarm. Not responding to an alarm can result in property loss, injury, or death.

### **IMPORTANT!**

The Silence Feature on these units can temporarily quiet an unwanted alarm for up to 8 minutes. To use this feature, press the Test/Silence button on the cover. **If the unit will not silence and no heavy smoke is present, or if it stays in silence mode continuously, it should be replaced immediately.**

---

## SILENCING THE END OF LIFE WARNING

This Silence Feature can temporarily quiet the low battery warning "chirp" for up to 8 hours. Press the Test/Silence button on the Alarm cover until you hear the acknowledge "chirp". Once the low battery warning "chirp" silence feature is activated, the unit continues to flash the green light once a minute for approximately 8 hours. After 8 hours, the low battery "chirp" will resume. **Deactivate the smoke alarm and replace immediately.**

**Do not try fixing the alarm yourself – this will void your warranty!**

If the Smoke Alarm is still not operating properly, and it is still under warranty, please see "How to Obtain Warranty Service" in the Limited Warranty.

## LOCATIONS TO AVOID FOR SMOKE ALARMS

For best performance, AVOID installing Smoke Alarms in these areas:

- Where combustion particles are produced. Combustion particles form when something burns. Areas to avoid include poorly ventilated kitchens, garages, and furnace rooms. Keep units at least 20 feet (6 meters) from the sources of combustion particles (stove, furnace, water heater, space heater) if possible. In areas where a 20-foot (6 meter) distance is not possible – in modular, mobile, or smaller homes, for example – it is recommended the Smoke Alarm be placed as far from these fuel-burning sources as possible. The placement recommendations are intended to keep these Alarms at a reasonable distance from a fuel-burning source, and thus reduce “unwanted” alarms. Unwanted alarms can occur if a Smoke Alarm is placed directly next to a fuel-burning source. Ventilate these areas as much as possible.
- In air streams near kitchens. Air currents can draw cooking smoke into the sensing chamber of a Smoke Alarm near the kitchen.
- In very damp, humid or steamy areas, or directly near bathrooms with showers. Keep units at least 10 feet (3 meters) away from showers, saunas, dishwashers, etc.
- Where the temperatures are regularly below 40° F (4.4° C) or above 100° F (37.8° C) including unheated buildings, outdoor rooms, porches, or unfinished attics or basements.
- In very dusty, dirty, or greasy areas. Do not install a Smoke Alarm directly over the stove or range. Clean a laundry room unit frequently to keep it free of dust or lint.
- Near fresh air vents, ceiling fans, or in very drafty areas. Drafts can blow smoke away from the unit, preventing it from reaching sensing chamber.
- In insect infested areas. Insects can clog openings to the sensing chamber and cause unwanted alarms.
- Less than 12 inches (305 mm) away from fluorescent lights. Electrical “noise” can interfere with the sensor.
- In “dead air” spaces. “Dead air” spaces may prevent smoke from reaching the Smoke Alarm.

---

## AVOIDING DEAD AIR SPACES

“Dead air” spaces may prevent smoke from reaching the Smoke Alarm. To avoid dead air spaces, follow the installation recommendations below.

**On ceilings**, install Smoke Alarms as close to the center of the ceiling as possible. If this is not possible, install the Smoke Alarm at least 4 inches (102 mm) from the wall or corner.

**For wall mounting** (if allowed by building codes), the top edge of Smoke Alarms should be placed between 4 inches (102 mm) and 12 inches (305 mm) from the wall/ceiling line, below typical “dead air” spaces.

**On a peaked, gabled, or cathedral ceiling**, install the first Smoke Alarm within 3 feet (0.9 meters) of the peak of the ceiling, measured horizontally. Additional Smoke Alarms may be required depending on the length, angle, etc. of the ceiling’s slope. Refer to NFPA 72 for details on requirements for sloped or peaked ceilings.

---

## LIMITED WARRANTY

BRK Brands, Inc., (“BRK”) the maker of First Alert<sup>®</sup> brand and BRK<sup>®</sup> brand products, warrants that for a period of ten years from the date of purchase, this product will be free from defects in material and workmanship.

BRK, at its option, will repair or replace this product or any component of the product found to be defective during the warranty period. Replacement will be made with a new or remanufactured product or component. If the product is no longer available, replacement may be made with a similar product of equal or greater value. This is your exclusive warranty. This warranty is valid for the original retail purchaser from the date of initial retail purchase and is not transferable. Keep the original sales receipt.

Proof of purchase is required to obtain warranty performance.

BRK dealers, service centers, or retail stores selling BRK products do not have the right to alter, modify or any way change the terms and conditions of this warranty. This warranty does not cover normal wear of parts or damage resulting from any of the following: negligent use or misuse of the product, use on improper voltage or current, use contrary to the operating instructions, disassembly, repair or alteration by anyone other than BRK or an authorized service center. Further, the warranty does not cover Acts of God, such as fire, flood, hurricanes and tornadoes or any batteries that are included with this unit.

BRK shall not be liable for any incidental or consequential damages caused by the breach of any express or implied warranty. Except to the extent prohibited by applicable law, any implied warranty of merchantability or fitness for a particular purpose is limited in duration to the duration of the above warranty. Some states, provinces or jurisdictions do not allow the exclusion or limitation of incidental or consequential damages or limitations on how long an implied warranty lasts, so the above limitations or exclusion may not apply to you. This warranty gives you specific legal rights, and you may also have other rights that vary from state to state or province to province.

### How to Obtain Warranty Service

**Service:** If service is required, do not return the product to your retailer.

In order to obtain warranty service, contact the Consumer Affairs Division at 1-800-323-9005, 7:00 AM - 7:00 PM Central Standard Time, Monday through Friday, and 8:00 AM - 6:00 PM Central Standard Time, Saturday and Sunday. To assist us in serving you, please have the model number and date of purchase available when calling.

### For Warranty Service return to:

BRK Brands, Inc., 1301 Joe Battle, El Paso, TX 79936

**Battery:** BRK Brands, Inc. make no warranty, express or implied, written or oral, including that of merchantability or fitness for any particular purpose with respect to battery.